

Eligibility for DBS Disclosure

This document will assist you in determining eligibility for a DBS Disclosure. The definitions used have been developed by the Home Office in consultation with the Disclosure & Barring Service (DBS), Department of Health (DH) and Department for Education (DfE).

The legislation which underpins these definitions is the Safeguarding Vulnerable Groups Act 2006 (SVGA) as amended by the Protection of Freedoms Act 2012

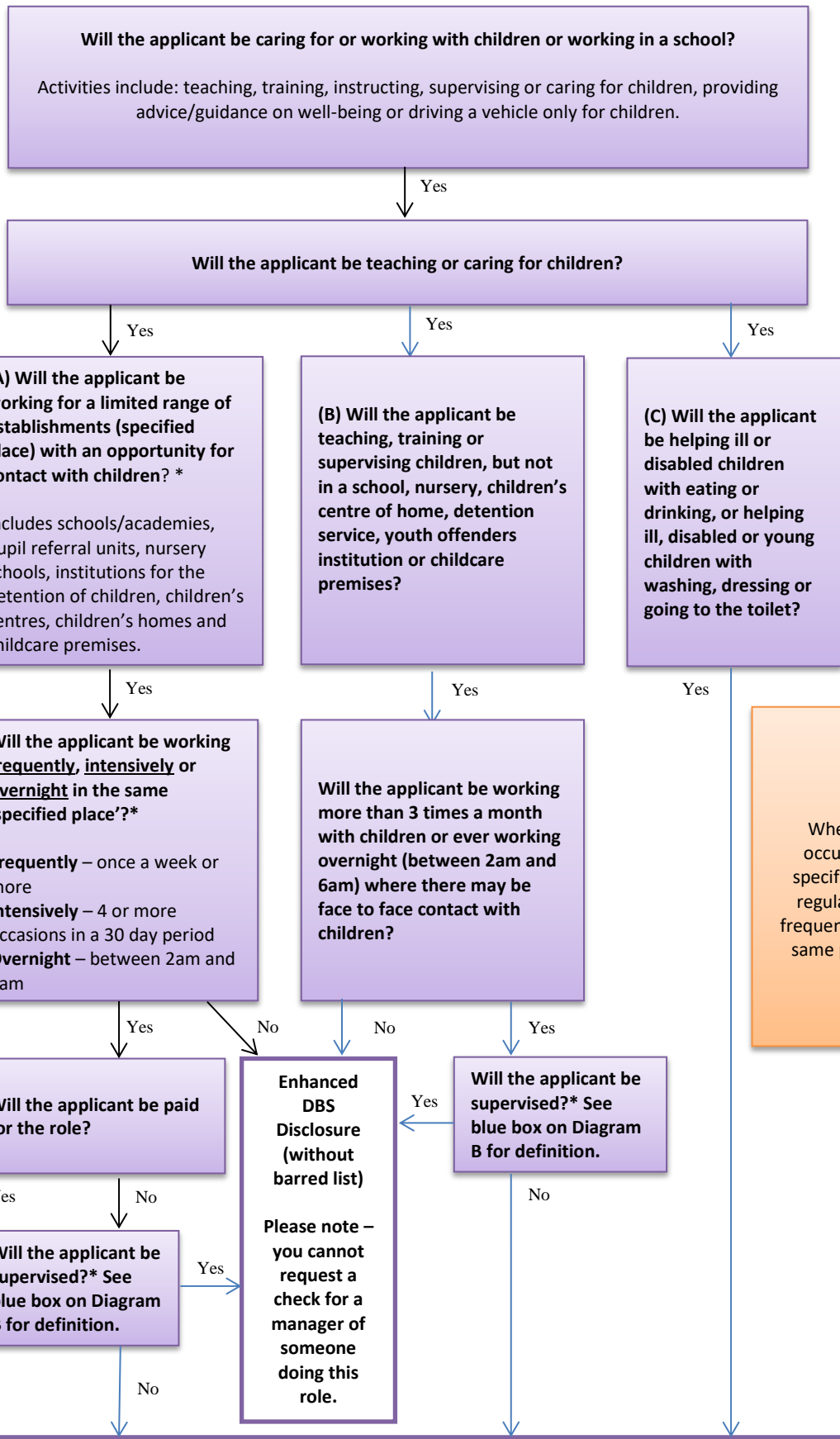
Diagrams to establish eligibility for a DBS Disclosure

Diagram A
For applicants who are teaching or caring for children

Diagram B
For applicants who are driving children, working in non-teaching roles in school or managing applicants who are in regulated activity with children

Diagram C
For applicants working with elderly, ill or disabled adults or managing applicants who are in regulated activity with adults

Diagram A



Enhanced DBS Disclosure with barred list (Children)

Diagram B

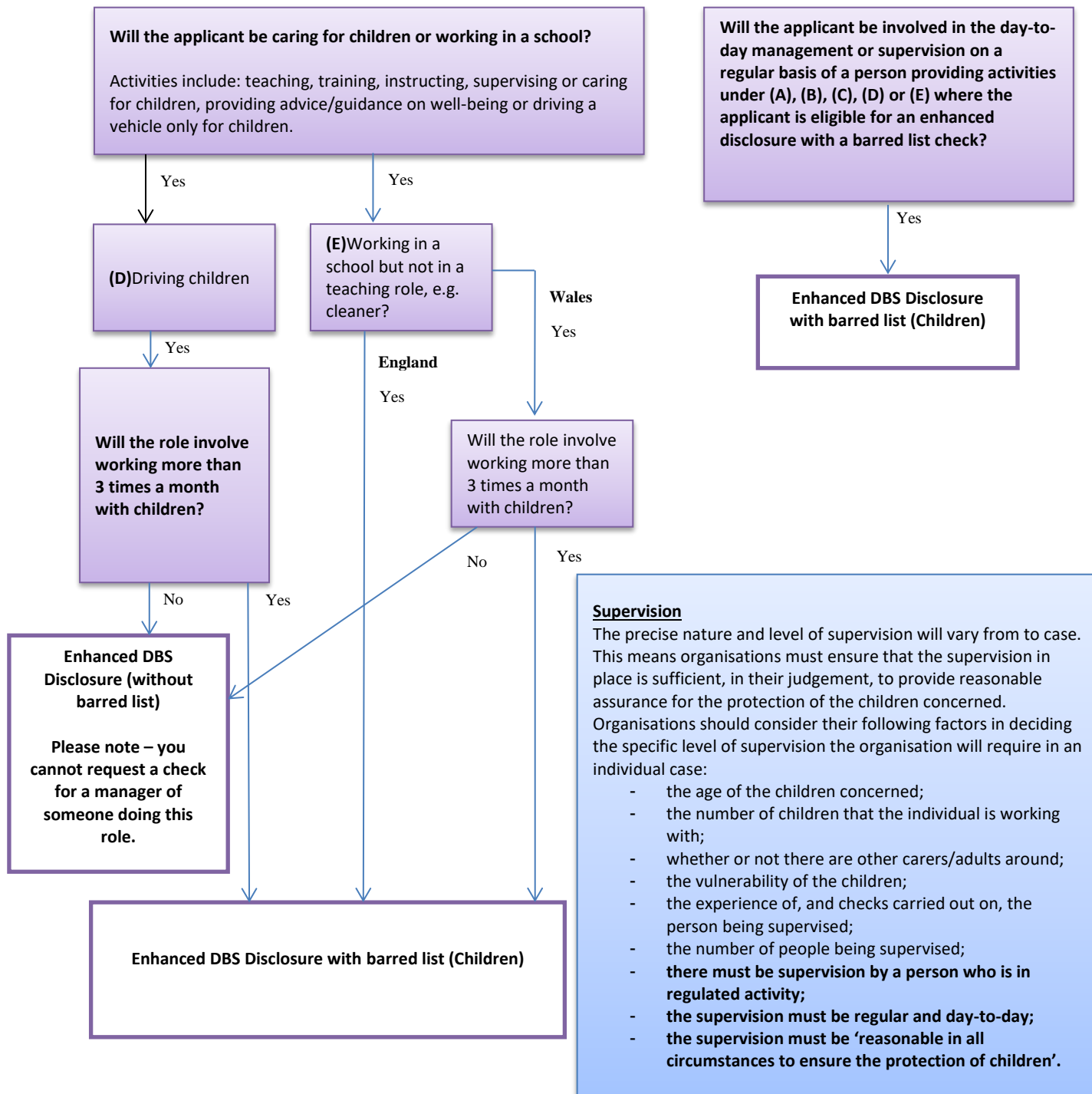


Diagram C

The focus is on the activities required by the adult and not on the setting in which the activity is received, nor on the personal characteristics or circumstances of the adult receiving the activities.

There is also no longer a requirement for a person to do the activities a certain number of times before they are engaging in Regulated Activity'

Any person providing day-to-day management or supervision of a person meeting any of the criteria (A-E) set out below will also require an DBS check at the same level as the applicant.

